



Scotland's response to the climate emergency

Scottish Environment LINK

A circular economy for a fairer footprint

June 2020

Phoebe Cochrane

A CIRCULAR ECONOMY

A WAY TO TACKLE THE CLIMATE AND ECOLOGICAL EMERGENCIES TOGETHER



The quantity and nature of the goods we consume are drivers of our climate and ecological emergencies.



90%
of global
biodiversity
loss

is caused by resource extraction and processing.

Over
80%
of Scotland's
carbon footprint

comes from the goods we use and consume, such as food, furniture, computers and vehicles.

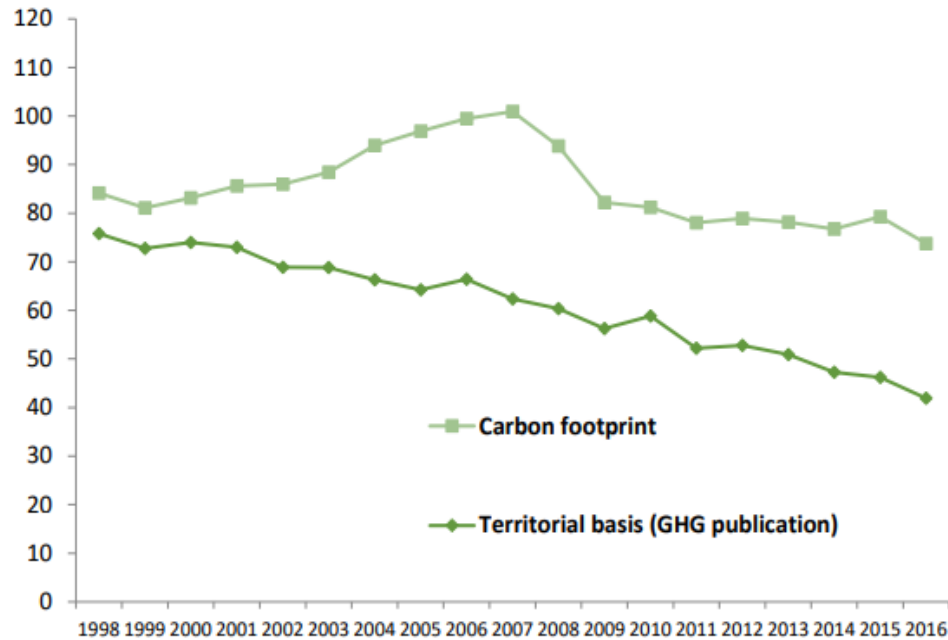


We are using approximately

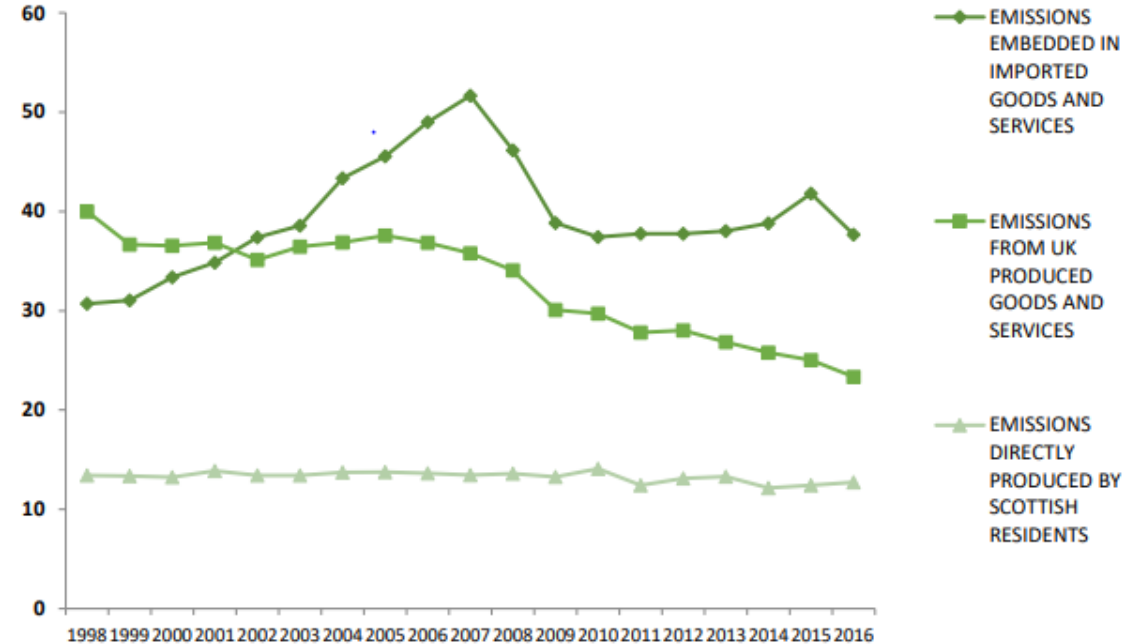
3x
our
share
of planetary resources.



Comparison of Scotland's carbon footprint with its territorial emissions, MtCO₂e

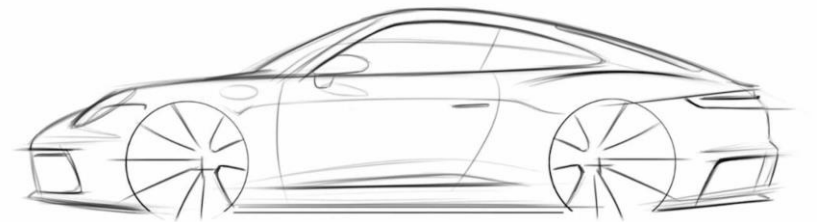


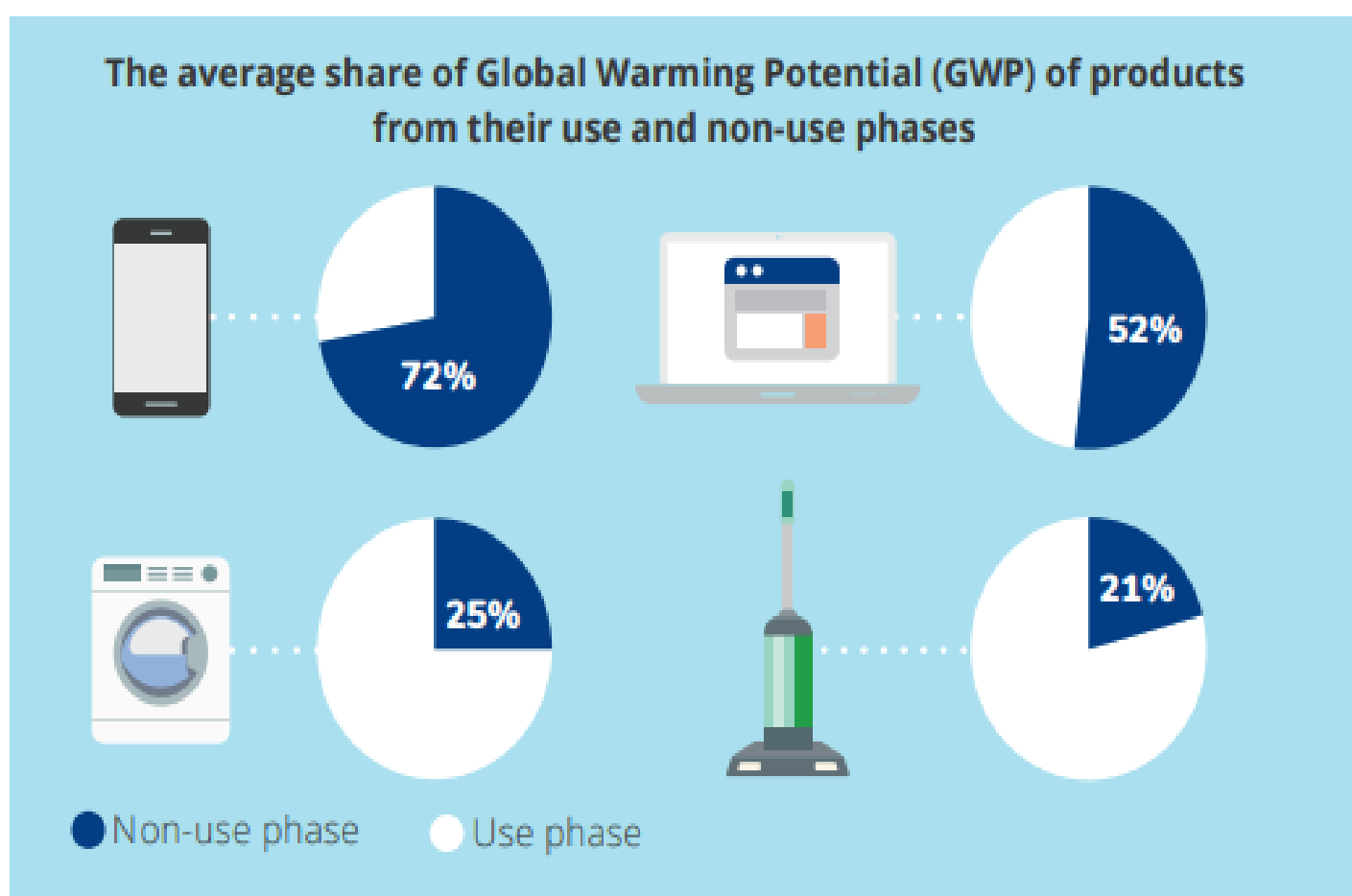
Scotland's carbon footprint 1998 – 2016 in MtCO₂e





Carbon associated with use and non-use phases

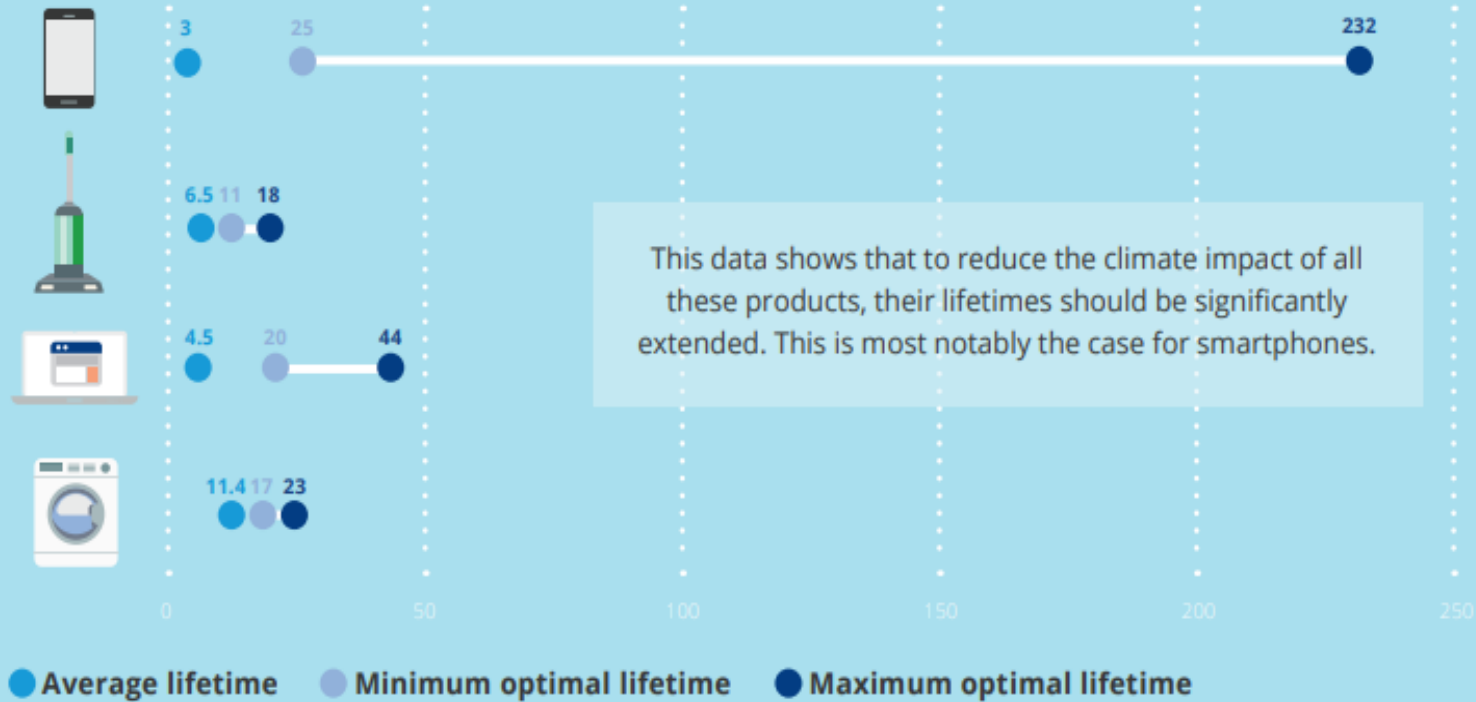




From <https://eeb.org/library/coolproducts-briefing/>

HOW LONG SHOULD PRODUCTS LAST FROM A CLIMATE PERSPECTIVE?

Average lifetime vs optimal lifetime to limit Global Warming Potential (years)



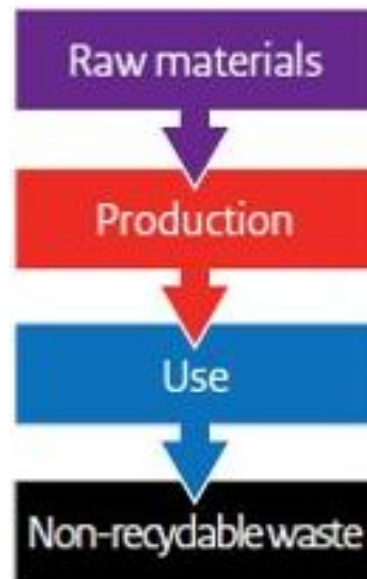
From <https://eeb.org/library/coolproducts-briefing/>



A circular economy is based on the principles of:

- keeping products and materials in use,
- designing out waste and pollution,
- and regenerating natural systems

Linear economy



Circular economy





New business models – sharing and providing a service rather than a product.

Regenerating natural systems

Making use of by-products and waste

Eco-design – making things so they can be repaired and components can be reused.

Fiscal incentives – charges or taxes

How to get there: strategic, cross-cutting

Product standards

Producer responsibility schemes

Circular public procurement

Consumer information and right to repair

Banning products or materials that are incompatible with circularity

Targets and a plan



A circular economy can help us address the climate emergency and get from 3 planets to one planet – our fair share.





THANK YOU

Phoebe Cochrane
phoebe@scotlink.org